

Presentation on Applied Period Freiburg, Germany (01.10-16.12.09)

Presented by:
MScEF student Dzmitry DZIAMYANAU
Supervised by: Prof. Dr Gerhard OESTEN
Dr. Roderich von DETTEN



Content

- Apply Period assignments
- Weekly plan of activities
- Research process
- 1) Country report
- 2) Qualitative research



Applied Period assignments

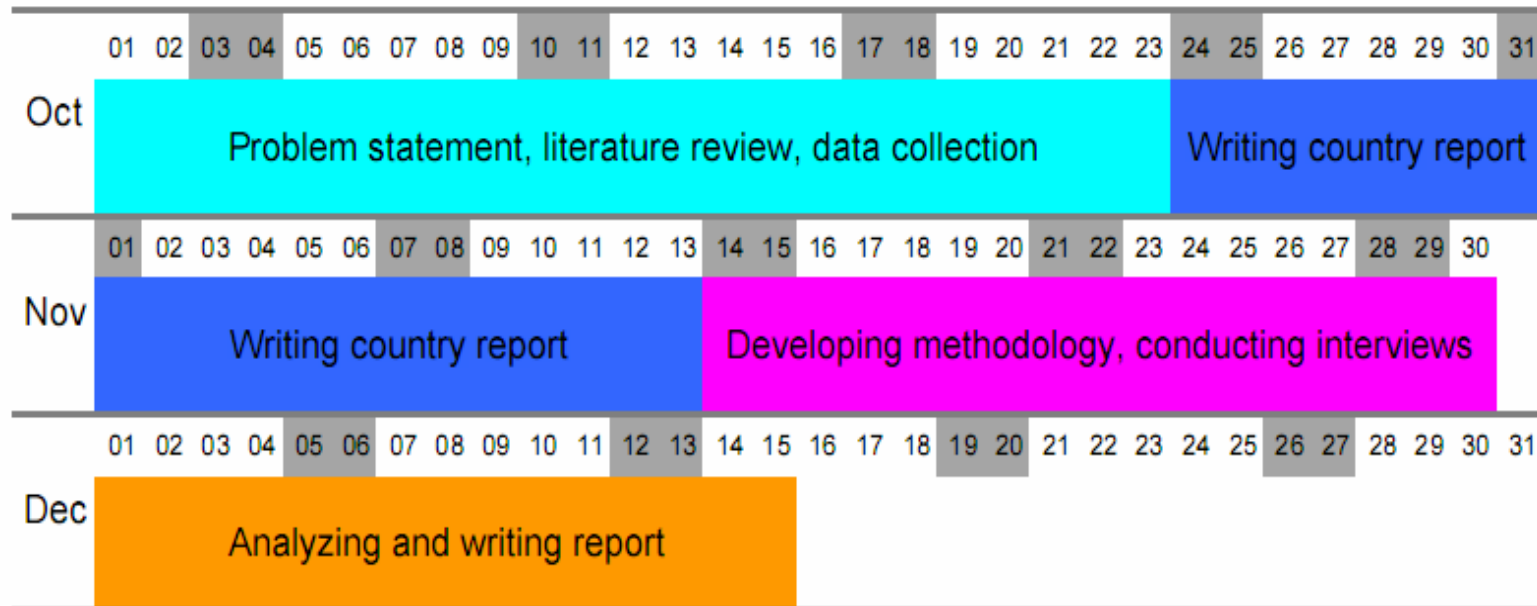
Initial tasks

- Overview of forest economic issues;
- Meeting experts and discussing related issues;
- Meeting official requirements of Applied Period;

Decisions

- Study relevant literature
- 1) Belarusian Country Report on “Forests&Bioenergy”
- 2) Conduct qualitative research on bio-energy development in Belarus: preliminary interviews

Weekly plan of activities





Research process

- Weekly meetings with supervisors;
- Consultations with colleagues;
- Excursion trips;
- Library & Internet research;
- Taking part in academic institute's sessions (colloquiums, presentation, defenses).

1) Belarusian Country report...

Strategy

- Literature study
- Writing report

1) Belarusian country report...



Objective:

To share and analyze general technical information related forest resources, their availability and assessment of the potential for their usage for bio-energy production in Belarus needed for qualitative research.

Structure:

- Forest characteristics
- Species composition and age structure
- Forest management issues
- Forest utilization
- Assessment of fuel wood potential
- Current state of the wood-fuel production
- Market analysis

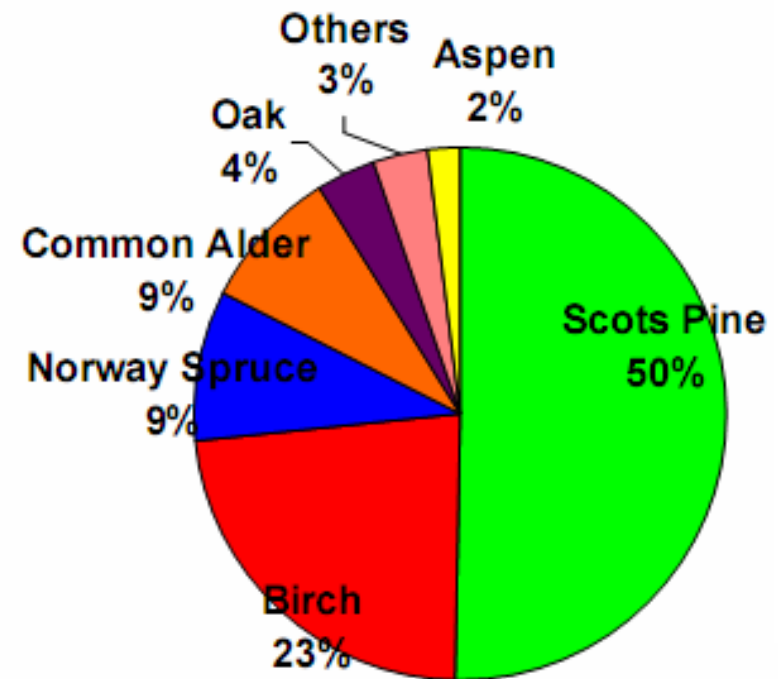


1) Belarusian country report...

Some data:

- Total area of the forest fund
9.4 million ha;
- Area covered by forests
7.9 million ha;
- Percentage of forest cover
38.1%;
- Total annual increment
30 million m³/year
- Total timber logging
15 million m³/year

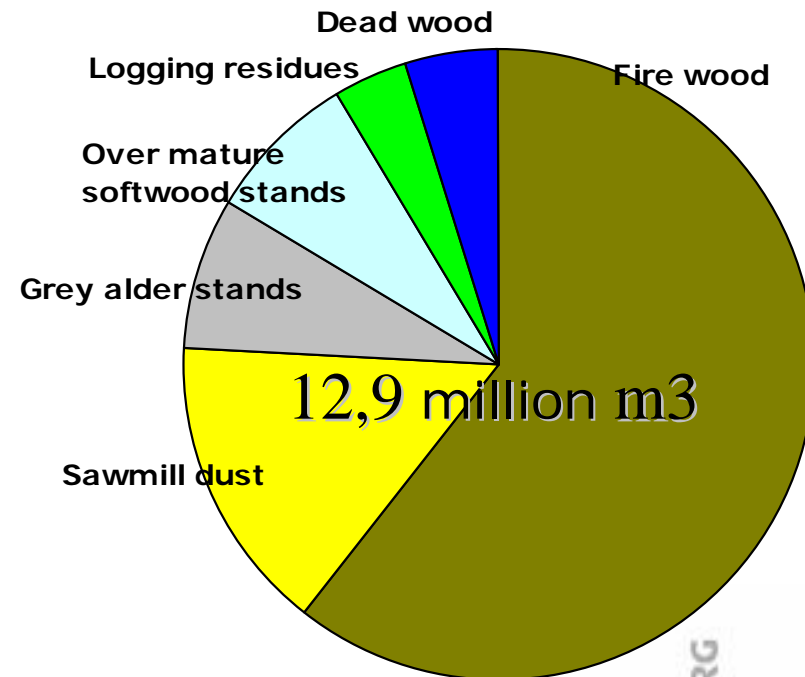
Species composition



1) Belarusian country report

- Total possible volume of wooden resources for energy 12,9 million m³/year
- Can be used for production of enhanced bio-fuels (pellets, bricks) 4,7 million m³/year
- Currently used for pellet production 0.13 million m³/year

Projected annual wood fuel stock 2010-15





2) Qualitative research...

Problem

Slow development of bio-energy industry and lack of information on it.

Purpose

- Study how research work is carried out.
- Identify, verify and analyze the key issues of bio-energy development in Belarus;
- Determine the general 'barriers' and 'drivers' of the wood based bio-energy sector in Belarus;



2) Qualitative research...

Objectives

- to explore general problems that pellet producers face (financial, technological, etc);
- to explore general constrains for promotion of pellets at home and foreign markets;
- to explore possible needed actions that could affect promotion of wood pellets consumption in the local market;
- to identify the potential actors in bio-energy products production.



2) Qualitative research...

Strategy:

- Literature review
- Methodology development
- Conducting pre-interviews
- Analysis and reporting

2) Qualitative research...

Three target groups for interviewing were selected:

Suppliers



Producers



End users





Qualitative research

Methodology

- Three target groups were selected for the survey;
- Questions were developed for each target group;
- Individuals for interviewing were randomly selected from each target group;
- The total amount of interviewers were 9 (3 from each target group);
- Interviews were conducted via mails and telephone conversations;
- Semi-structured interview scheme was applied.

2) Qualitative research

Results

- Experience methodology for the forthcoming detailed research;
- Issues that should to be investigated in upcoming surveys, some of them are:
 - a) lack of government's incentives regarding private owned plants;
 - b) lack of investments;
 - c) lack of technical capacity in all target groups;
 - d) insufficient state policy towards bio-energy development.

Conclusions

Provided materials and methodology can be used for detailed qualitative research study – questionnaire.

Thank you!