



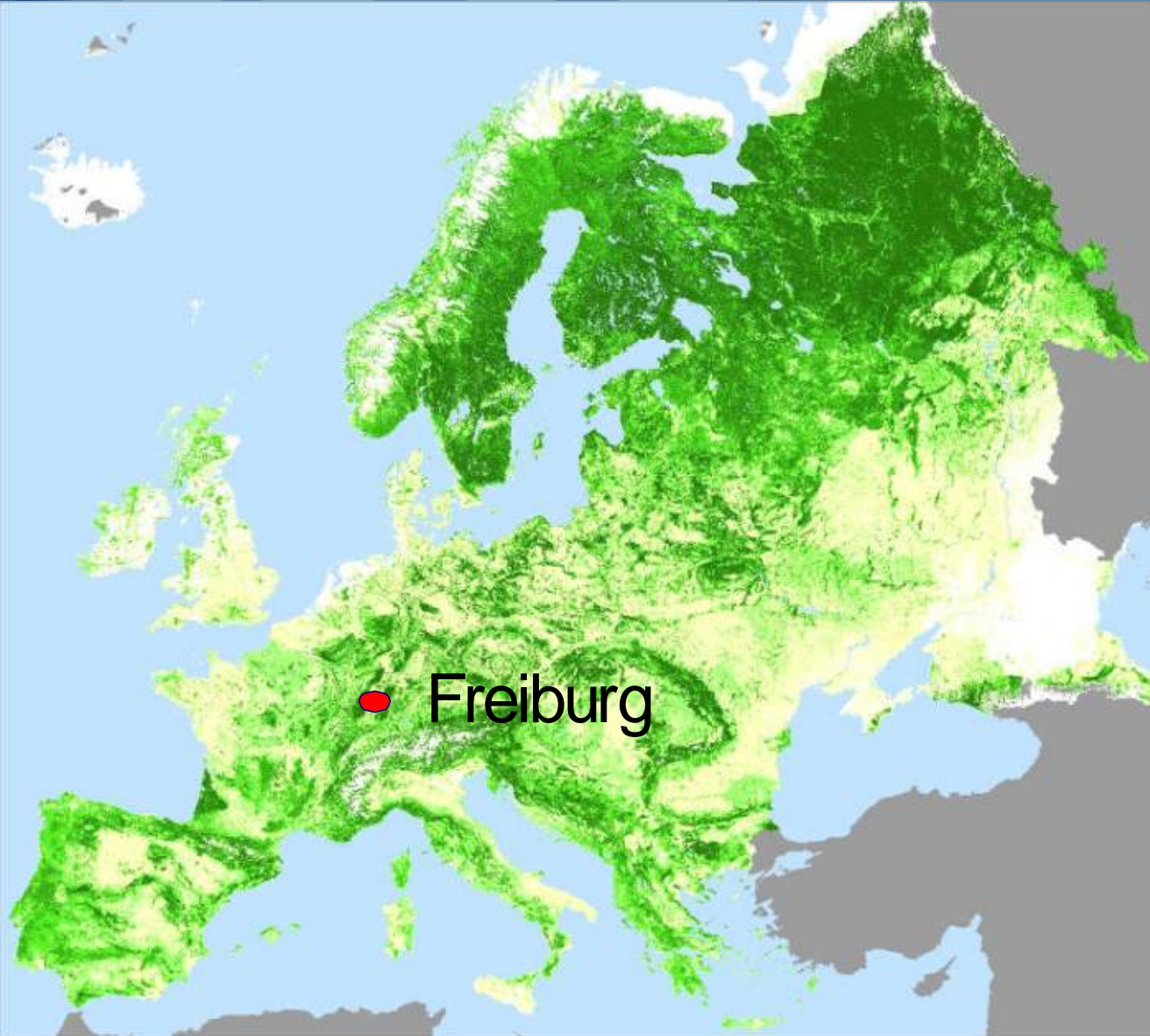
# Faculty of Environment and Natural Resources Freiburg, Germany

Heinrich Spiecker

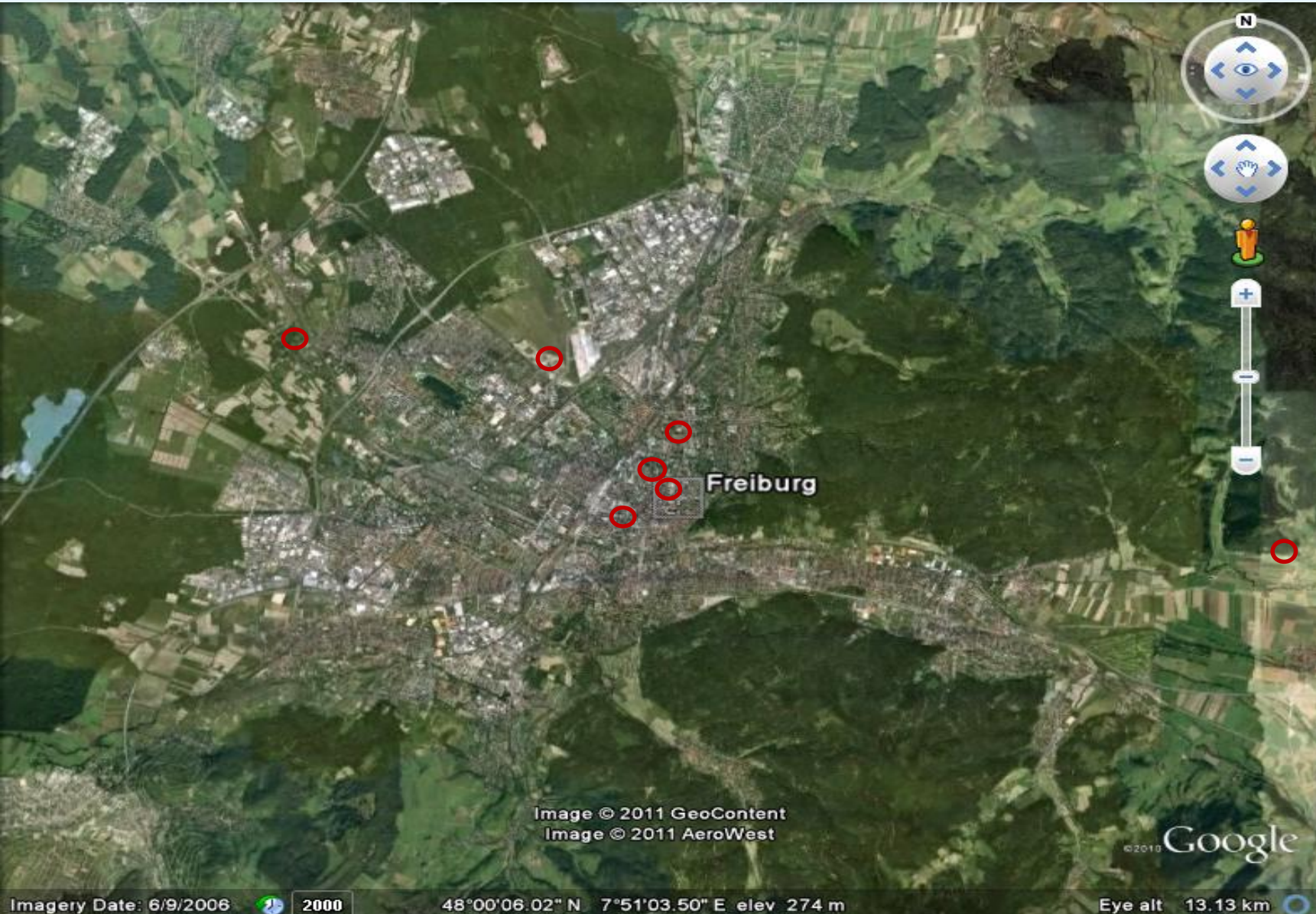
# Mission

Research and Teaching of the Faculty focus on the interactions between environment and society.

Interdisciplinary approaches including natural, social and technical sciences are employed to research and teach the sustainable use and conservation of natural resources.









Schwarzwaldverein SV  
Hans-Klammer-Weg  
1368 m  
FELDSEE  
ST. WILHELM  
Merkur-Schutzhütte

Feldbergturm ☀	0,7 km
St. Wilhelmer Hütte X	3,1 km
Zastler Hütte X	4,8 km
Baldenweger Hütte X	5,9 km

Schwarzwaldverein SV  
Hans-Klammer-Weg  
1368 m  
FELDSEE  
Merkur-Schutzhütte

Haus der Natur	0,9 km
Feldsee	2,5 km
Raimartihof X	2,9 km
Zastler Hütte X	6,5 km



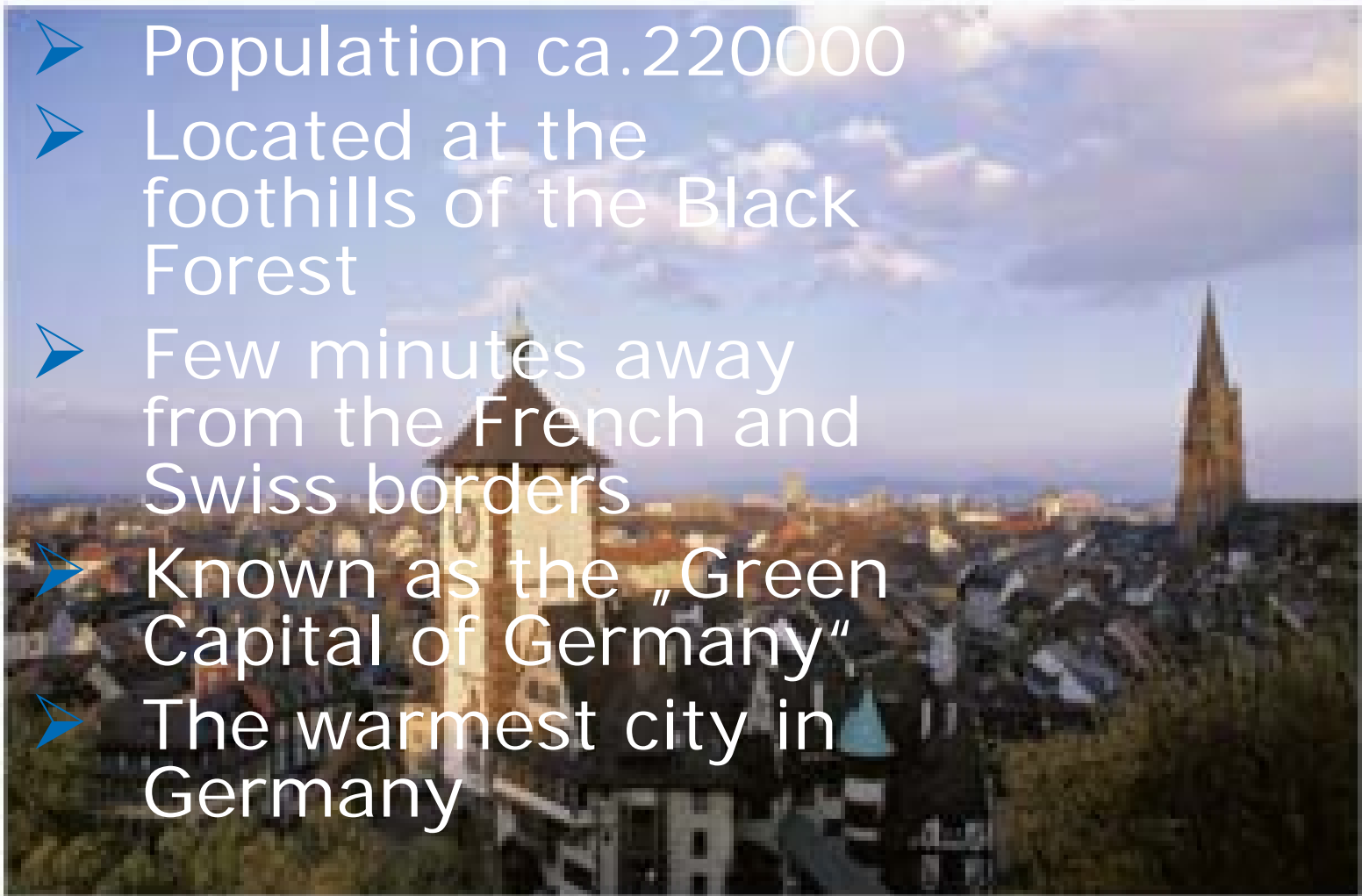








- Population ca. 220000
- Located at the foothills of the Black Forest
- Few minutes away from the French and Swiss borders
- Known as the „Green Capital of Germany“
- The warmest city in Germany







*The city of Freiburg, with the Münster under restoration (Photo by Jennifer Nielsen)*

*“The city of Freiburg is a university city, so there will be always lots of students everywhere. This means that you will probably have lots of good time and make a lot of friends. It is also a very beautiful town, with a very old history and architecture, situated just at the foothills of the Black Forest”*

*(Vlad Strimbu, former Master student from UBC).*







## The University

- founded in 1457
- 11 faculties
- 6 interdisciplinary research centres
- 24 800 students (3780 international students)
- 'studium generale'
- diverse university sport facilities
- university cultural life (orchestra, choirs, movie club etc.)





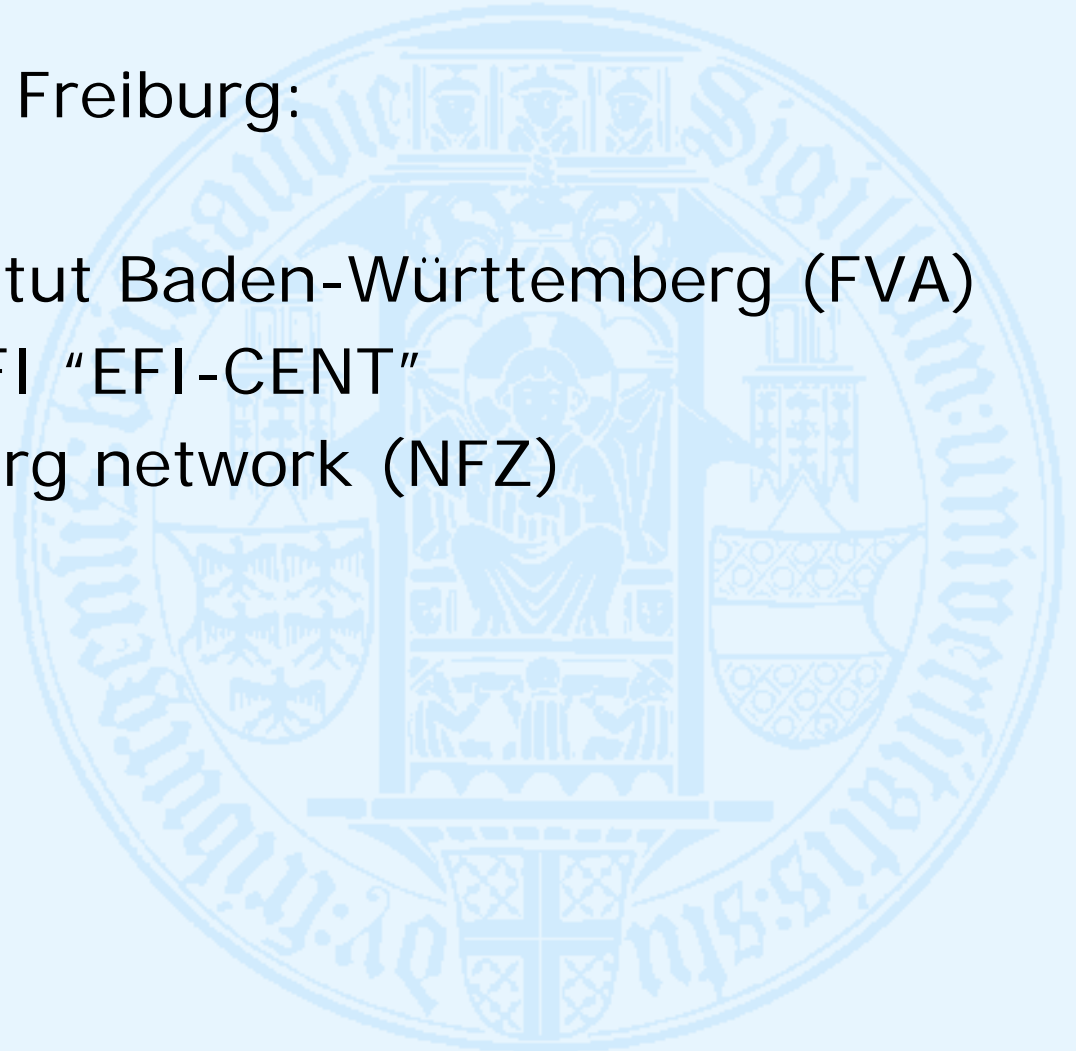
# The centre of the faculty





Partner institutions at Freiburg:

- Forest Research Institut Baden-Württemberg (FVA)
- Regional Office of EFI "EFI-CENT"
- Nancy-Zürich-Freiburg network (NFZ)



# The faculty in FIGURES

- 3 institutes
  - **Forest Sciences**
  - Earth and Environmental Sciences
  - Environmental. Social Sc. and Geography
- 135 permanent staff
- 35 full professors
- 1272 students (effective 2010)
- 250 PhD students



# chairs

## Forest Science:

17 Chairs:

[Tree Physiology](#)

[Bio-based Materials Engineering](#)

[Biometry and Environmental System Analysis](#)

[Soil Ecology](#)

[Remote Sensing and Landscape Information Systems](#)

[Forest Biomaterials](#)

[Forest Botany](#)

[Forestry Economics and Forest Planning](#)

[Forest- and Environmental Policy](#)

[Forest Operations](#)

[Forest Zoology and Entomology](#)

[Meteorology und Climatology](#)

[Site Classification and Vegetation Science](#)

[Silviculture](#)

[Forest History](#)

[Forest Growth and Dendroecology](#)

[Wildlife Ecology and Management](#)

# Important Research Areas of the Forest Science Institute

- Sustainable use of natural resources and renewable energy
- Safeguarding of natural resources: soil, water, air, biodiversity
- Adaptation to Global Change
- Natural Hazards



# Earth- and Environmental Sciences

Chair of:

[General Geology](#)

[Tree Physiology](#)

[Bio-based Materials](#)

[Biometry and Environmental System Analysis](#)

[Soil Ecology](#)

[Remote System and Landscape Information](#)

[Systems](#)

[Forest Biomaterials](#)

[Forest Operations](#)

[Geochemistry](#)

[Hydrology](#)

[Crystallography](#)

[Landscape Management](#)

[Meteorology und Climatology](#)

[Mineralogy und Petrology](#)

[Nature Conservation and Landscape Ecology](#)

[Near Surface Geophysics \(N.N.\)](#)

[Physical Geography](#)

[Sedimentology](#)

[Forest Growth and Dendroecology](#)

[General Geology](#)

[Bio-based Materials](#)

[Biometry and Environmental System Analysis](#)

[Renewable Materials](#)

[Geochemistry](#)

[Hydrology](#)

[Crystallography](#)

[Landscape Management](#)

[Meteorology and Climatology](#)

[Mineralogy and Petrology](#)

[Nature Conservation and Landscape](#)

[Ecology](#)

[Near Surface Geophysics \(N.N.\)](#)

[Sedimentology \(N.N.\)](#)



# chairs

## Environmental Social Sciences and Geography

Chair of:

[Biogeography](#)

[Environmental Governance](#)

[Forestry Economics and Planning](#)

[Forest- and Environmental Policy](#)

[Human Geography](#)

[Cultural Geography](#)

[Landscape Management](#)

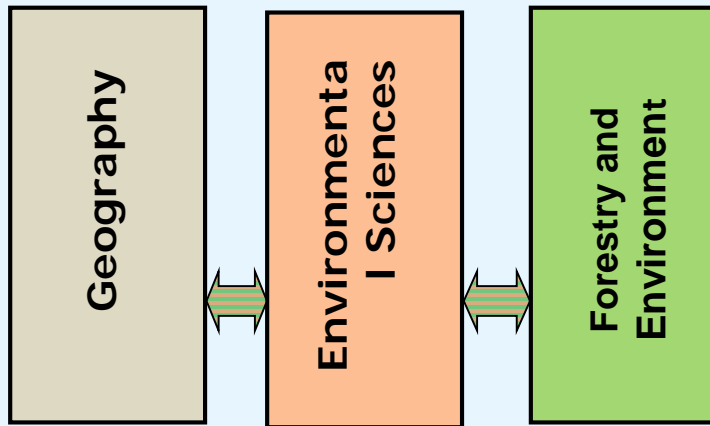
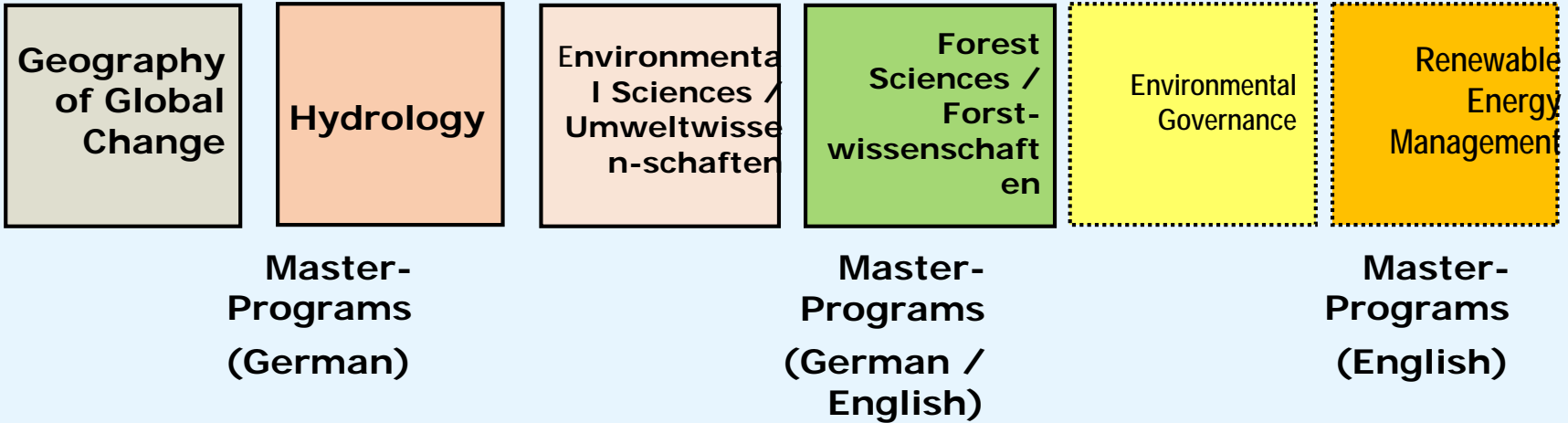
[Ecological Energy and Material Flow Management \(N.N.\)](#)

[Physical Geography](#)

[Environmental Economics and Resource Management \(N.N.\)](#)

[Forest and Forestry History](#)

# The faculty's STUDY PROGRAMS



Bachelor- Programs (German)

## BSc Secondary subjects

- International Forestry
- Wood and Bioenergy
- Landscape Development and Nature Protection
- Meteorology and Climatology
- Environmental Hydrology



# Joint MSc Programs

- MSc European Forestry (Erasmus Mundus)
- MSc Transfor M (Canada)

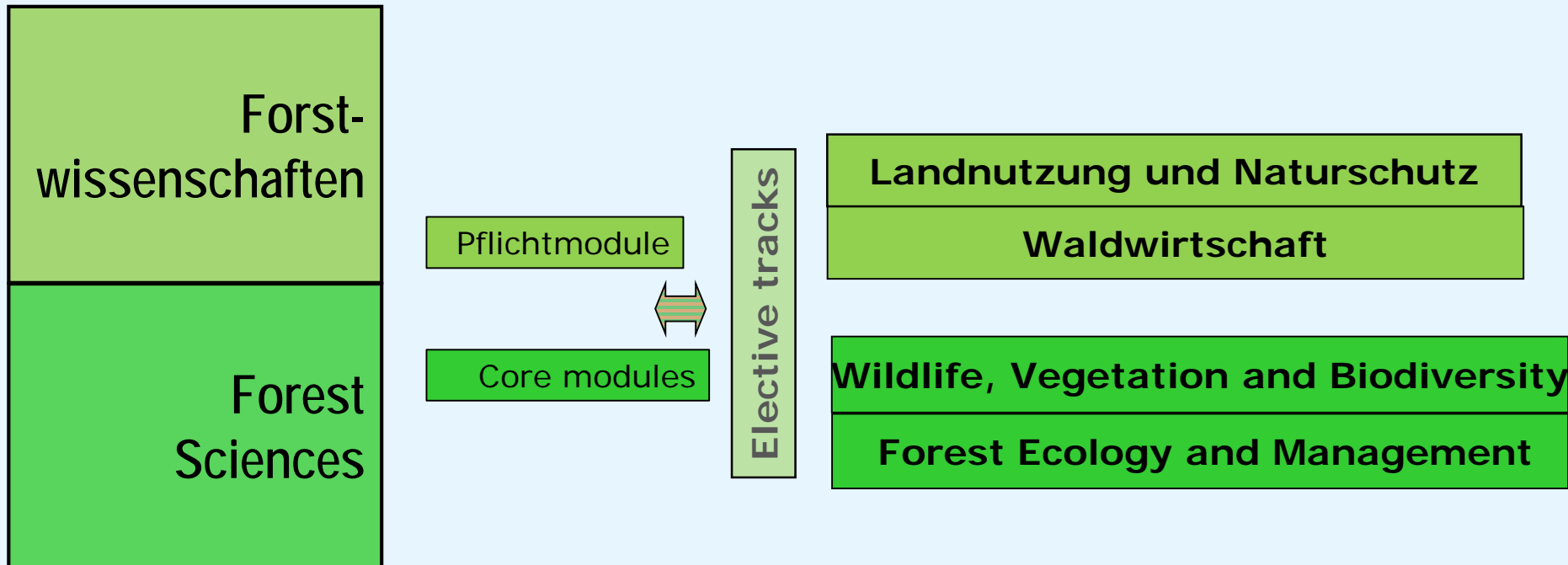
## MSc Programs

- duration: 2 years
- 120 ECTS
  - coursework (3 sem.) 80 ECTS
  - internship (7 weeks) 10 ECTS
  - thesis (6 months) 30 ECTS
- Starting date: October
- Group size: 25-30 students
- Language: English and German taught programs

## Masters Programmes

- M.Sc. Environmental Governance (English)
- **M.Sc. Forest Sciences (English/German)**
- M.Sc. Environmental Sciences (English/German)
- M.Sc. Renewable Energy Management (English)
- **M.Sc. European Forestry, joint program (English)**
- **M.Sc. Transfor-M, joint program (English)**
- M.Sc. Geography of Global Change (German)
- M.Sc. Hydrology (German)

# MSc Forest Sciences (English / German)



# MSc Forest Sciences (English / German)

winter 2014/15

Research Skills  42220	Global Environmental Changes 94125	Human-Environment Interactions 94145
------------------------------	---------------------------------------	---

<u>Biodiversity</u>  52110	Research in <u>Wildlife Ecology</u>  52120	<u>Conservation Biology</u>  52130
----------------------------------	--	--

Forest Resources, their Goods and Services 54120	<u>Plantation Forestry</u>  54130	<u>Tropical Forestry</u>  54145
---	---	---------------------------------------

Forest Resources and Management in France+Germany 8 TN	<u>Landscape Ecology</u>  25 TN	Laboratory Course in <u>Dendroecology</u> 9 TN
---	---------------------------------------	---

Ecosystem Services: Chances and Challenges 20 TN	Economics of Biodiversity and Ecosystem Services 20 TN	Carbon Forestry 20 TN
---	---	--------------------------

Natural Hazards & Risk Mgmt. 20 TN	<u>Biomass Resource Assessment</u> 20 TN	<u>Wildlife Habitat Modeling</u> 15 TN
---------------------------------------	---	---

(incomplete examples)



# Students life in Freiburg



**Fernando Campos**  
University of Freiburg  
MSc of European Forestry

## FOREST SCIENCES

- Courses:
  - Selection among study tracks compulsory and selective courses
  - Modules of 3 weeks (5 ECTs)
  - Selected topic
  - Exam registration
- Thesis:
  - Registration and deadline
- Job opportunities:
  - HiWi
  - Student assistant

## ... housing

- Student houses and private rooms  
(monthly rent: 250-350 €)
- Website search
  - <http://www.wg-gesucht.de/>
  - [www.WG-Zimmer.de](http://www.WG-Zimmer.de)
  - [www.ZimmerFREI-BURG.de](http://www.ZimmerFREI-BURG.de)
  - [www.studenten-wg.de](http://www.studenten-wg.de)





# The life...

## ... main attractions



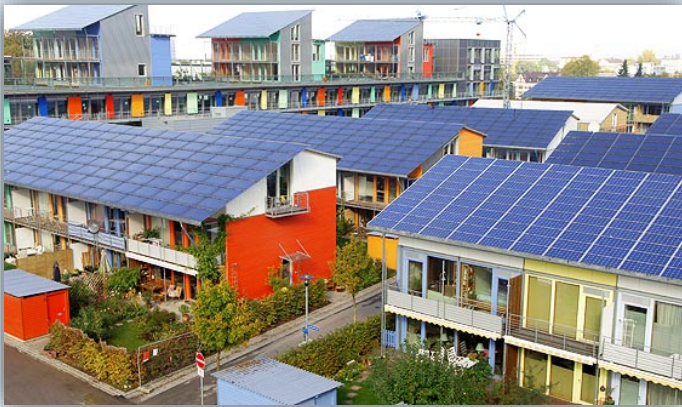
# The life...

... the Black Forest





... living greener





THANK YOU FOR YOUR ATTENTION